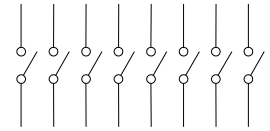
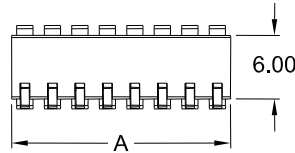
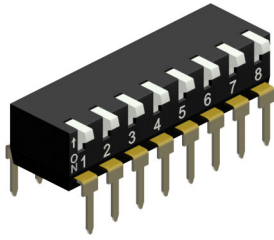


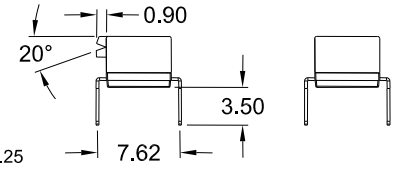
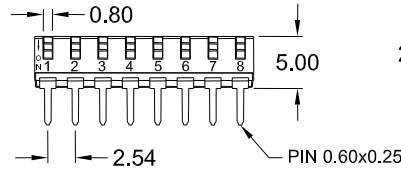
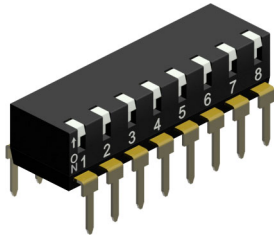
Extended Actuator



Extended Actuator

Low Profile Actuator

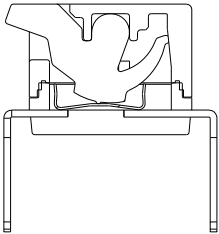
Low profile Actuator



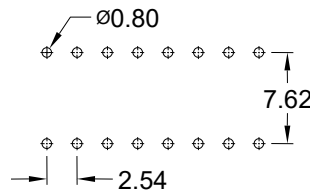
Position	2	4	6	8	10
Dim. "A"	4.98	10.06	15.15	20.22	25.30

Unit: mm

Construction



PCB Hole Layout



Precautions in Handling

Do not wash the switch!
Washable Type not available.

SPECIFICATIONS

Electrical data

Contact Rating	25 mA, 24 V DC
-switching	100 mA, 50 V DC
-non-switching	
Contact Resistance	
-initial	100 mΩ max.
-after life test	200 mΩ max.
Insulation Resistance	100 MΩ min. at 500 V DC
Withstanding Voltage	500 V AC for 1 Minute
Capacitance between adjacent switches	5 pF max.

Mechanical and Environmental data

Operating Temperature	-20°C to +85°C
Storage Temperature	-40°C to +85°C
Operating Force	800 gf max.
Mechanical Life	2000 operations
Vibration	10 Hz – 50 Hz – 10 Hz for 6 hours

FEATURES

- End stackable for standard 2.54mm (.100") integrated circuit pitch
- Twin contact design to ensure stable contact
- All plastics used are UL 94V-0 grade fire retardant
- Gold plated contacts, contact & solder area (*gold/gold*), to ensure low contact resistance

How to order

DPI – 1 xx – XX 1 0 Z

Nbr of positions

see under position/dimension box above

Example:
2 Position = 02
4 Position = 04
etc.

Actuator and "ON/OFF" Position

EA	= Extended Actuator; Top side OFF
EB	= Extended Actuator; Top side ON
LA	= Low profile Actuator; Top side OFF
LB	= Low profile Actuator; Top side ON

Packing

0 = Tube packing