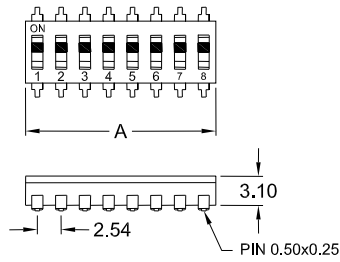
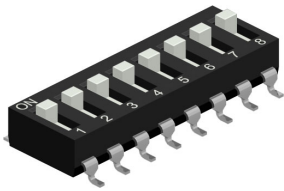


DSD / DSL Series

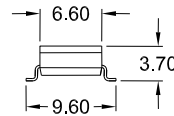
SLIDE END STACKABLE "SMT" TYPE



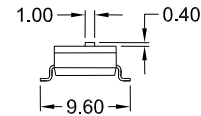
DSD Gull Wing Type



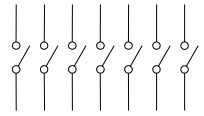
Low Profile Actuator



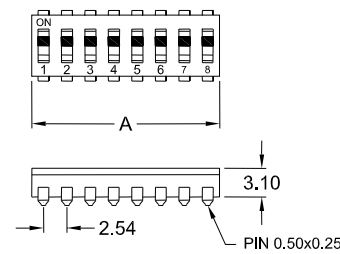
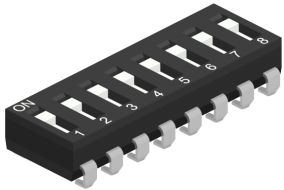
Extended Actuator



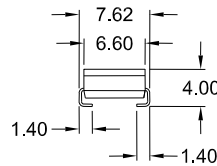
Circuit diagram



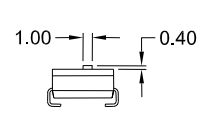
DSL J-Leg Type



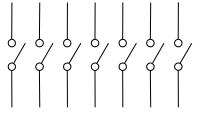
Low Profile Actuator



Extended Actuator



Circuit diagram



Position	1	2	3	4	5	6	7	8	9	10	12
Dim. "A"	2.50	5.04	7.58	10.12	12.66	15.20	17.74	20.28	22.82	25.36	30.43

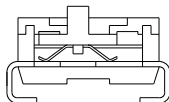
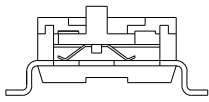
DSL Series: 1 position switch is not available

Unit: mm

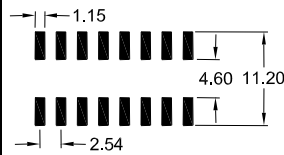
Construction

DSD

DSL



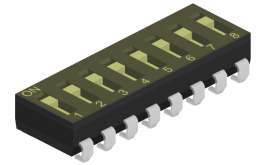
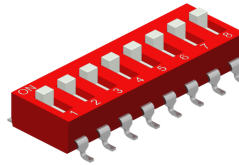
PCB SMT Layout



Options

1. Special marking and body color available

2. Tape sealed



SPECIFICATIONS

Electrical data

Contact Rating	25 mA, 24 V DC
-switching	100 mA, 50 V DC
-non-switching	
Contact Resistance	
-initial	50 mΩ max.
-after life test	100 mΩ max.
Insulation Resistance	1000 MΩ min. at 100 V DC
Withstanding Voltage	500 V AC for 1 Minute
Capacitance between adjacent switches	5 pF max.

Mechanical and Environmental data

Operating Temperature	-25°C to +70°C
Storage Temperature	-40°C to +85°C
Soldering Temperature	
-SMT reflow soldering	250°C +0/-5°C for 10 sec.
Operating Force	800 gf max.
Mechanical Life	2000 operations
Vibration	10 Hz – 50 Hz – 10 Hz for 6 hours

FEATURES

- End stackable for standard 2.54mm (.100") integrated circuit pitch
- Tape sealed to withstand solder vapors and board washing
- All plastics used are UL 94V-0 grade fire retardant

- Twin contact design to ensure stable contact
- Gold plated contacts to ensure low contact resistance, and tin plated terminal to prevent contamination during soldering (*gold/tin*)

How to order

DSX – 1 xx – XX Z

Series

DSD = Gull Wing Type

DSL = J-Leg Type

Nbr of positions

see under position/dimension box above

Example:
1 Position = 01
2 Position = 02
etc.

Actuator, Sealing and Packing

- L** = Low Profile Actuator; Tube packing
- LT** = Low Profile Actuator & Tape sealed; Tube packing
- LC** = Low Profile Actuator; Reel packing
- LD** = Low Profile Actuator & Tape sealed; Reel packing
- E** = Extended Actuator; Tube packing