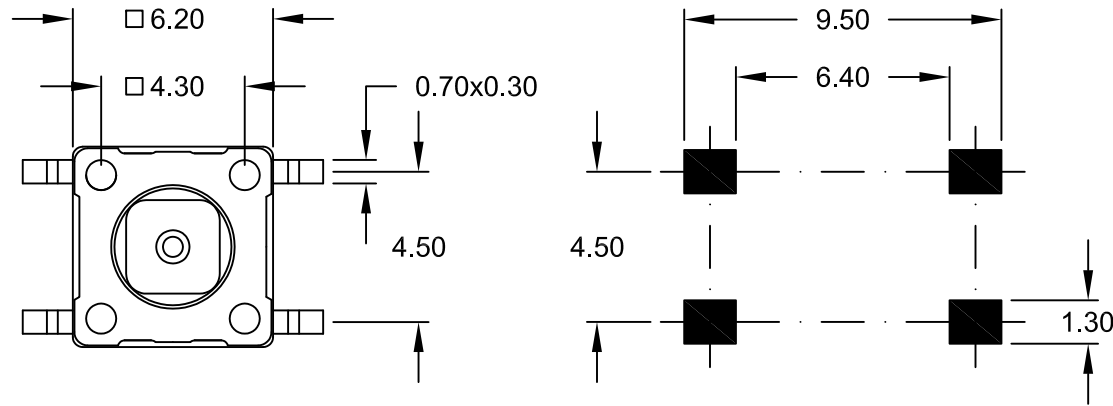
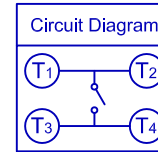


REV.	DESCRIPTION	DATE	DRAWN
A	NEW	10.06.2010	Ronny
B	update RoHS	24.11.2014	Ronny



Recommended PCB Layout
(Top View)



Order Code
TSM-602-48NX/1SZ

Packing Option

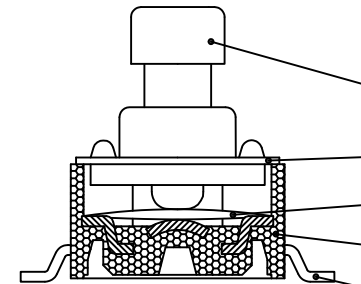
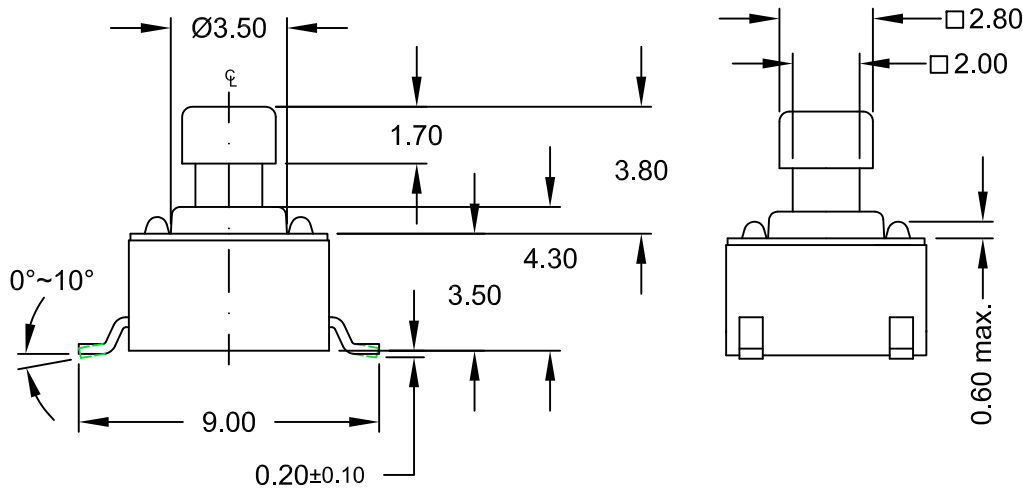
T = Tube

C = Reel

Specifications

Electrical

Current rating: 50mA, 12V DC
 Insulation resistance: 100MΩ min.
 Withstanding voltage: 50V AC (50Hz or 60Hz) 1Minute
 Contact resistance: 100mΩ max.
 Temperature range: -40°C to +85°C
 Solder heat resistance: +255°C +0/-5°C
 for 5 to 10 seconds
 Operating force: 1.6N ±0.50N



ITEM	DESC.	MATERIALS	TREATMENT
1	Stem	Nylon UL 94V-0	1.6N = brown (colour depend on operating force)
2	Cover	stainless steel	none
3	Contact	Phosphor Bronze	with Silver cladding
4	Base	Nylon UL 94V-0	molded black
5	Terminal	Brass	with Silver plating 0.5µm



UNIT	mm	GENERAL TOLERANCE		DRAWN	DATE	DWG. NO.	SHEET 1/1
SCALE	Free	X.° ±	X. ±	Ronny	10.06.2010	TSM-48N/1SZ	REV. B
		.X° ±	.X ±	Ronny	24.11.2014	SERIES NO.	
		.XX° ±	.XX ± 0.20	Hogi	25.11.2014	TSM-602-xxNX/1SZ	
		.XXX° ±	.XXX ±				

Tactile Switch SMT 6x6
1.6N Type stem height 3.80mm
NON-washable