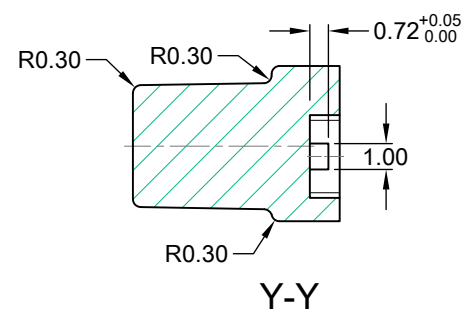
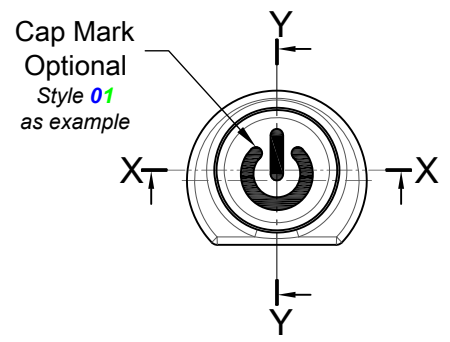


REV.	DESCRIPTION	DATE	DRAWN
A	New	29.11.2018	Ronny
B	General update	10.01.2019	Ronny
C	New frame / add 3D	14.04.2021	Ronny
D	General Update	12.05.2022	Cherry

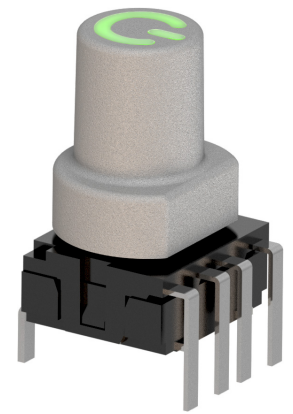
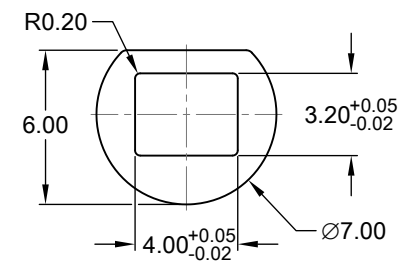
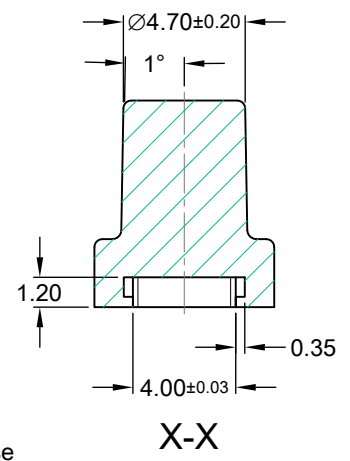
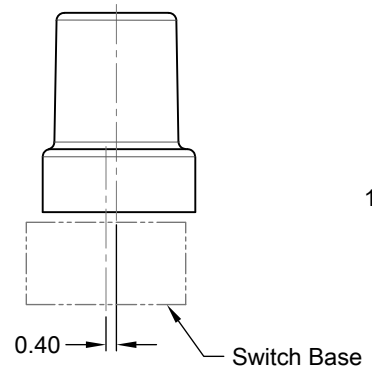
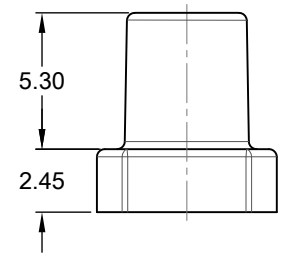


Order Code
TCP-775-81X **XX**

Cap Color
(Powder coated)
Black = **B**
Silver = **S**
Transparent = **T**

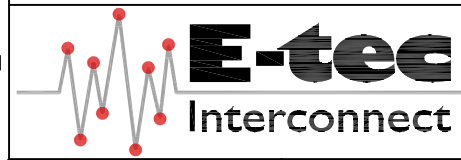
Cap Mark Option

	0	1	2	3	4	5	6	7	8	9
0	NO Mark	⏻	⏪	⏩	⏹	⏺	⏸	⏷	⏶	⏵
1	⏻	⏪	⏩	⏹	⏺	⏸	⏷	⏶	⏵	🔗
2	START	RESET	Reset	CMOS	CMOS	Turbo				
3	⬆	⬅	➡	⬇	+	-	▲	●		



Material
PC (Polycarbonate) UL 94V-0

E-tec 2021 © - all rights reserved www.e-tec.asia



UNIT	mm	GENERAL TOLERANCE		DRAWN	DATE	DWG. NO.	SHEET 2/2
SCALE	Free	X.° ±	X. ±	Ronny	29.11.2018	TCP-775-81	REV. D
		.X° ±	.X ±	Cheng	16.05.2022	SERIES NO.	
		.XX° ±	.XX ± 0.05	Fagi	16.05.2022	TCP-775-81Xxx	
		.XXX° ±	.XXX ±				

Cap
for LED Illuminated
Tactile Switches