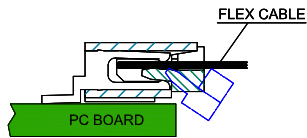
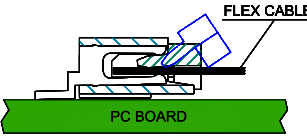


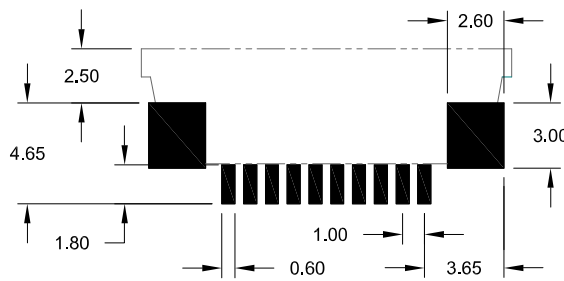
upper contact Style 102



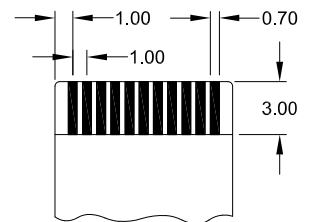
lower contact Style 103



PCB Surface Mount Layout



Recommended FPC/FFC dimensions



thickness 0.30mm±0.05

SPECIFICATIONS

Current rating	0.5 A max.	Operating temperature	- 20°C to +85°C
Insulation resistance	500 MΩ min.	Processing temperature	+250°C +0/-5°C for 3sec.
Contact resistance	30 mΩ max.	Contact material	Phosphor Bronze (RoHS compliant)
Withstanding voltage	500 V AC	Contact plating	Tin (leadfree)
		Insulator material	LCP (nature) UL 94 V-0 (RoHS compliant)
		Actuator material	LCP (black) UL 94 V-0 (RoHS compliant)

Dimensions (mm)

Contacts	DIM "A"	DIM "B"	DIM "C"	Contacts	DIM "A"	DIM "B"	DIM "C"	Contacts	DIM "A"	DIM "B"	DIM "C"
004	9.05	11.00	5.10	013	18.05	20.00	14.10	022	27.05	29.00	23.10
005	10.05	12.00	6.10	014	19.05	21.00	15.10	023	28.05	30.00	24.10
006	11.05	13.00	7.10	015	20.05	22.00	16.10	024	29.05	31.00	25.10
007	12.05	14.00	8.10	016	21.05	23.00	17.10	025	30.05	32.00	26.10
008	13.05	15.00	9.10	017	22.05	24.00	18.10	026	31.05	33.00	27.10
009	14.05	16.00	10.10	018	23.05	25.00	19.10	027	32.05	34.00	28.10
010	15.05	17.00	11.10	019	24.05	26.00	20.10	028	33.05	35.00	29.10
011	16.05	18.00	12.10	020	25.05	27.00	21.10	029	34.05	36.00	20.10
012	17.05	19.00	13.10	021	26.05	28.00	22.10	030	35.05	37.00	31.10

How to order

FCZ - xxx - H xxx - 99 /R

