

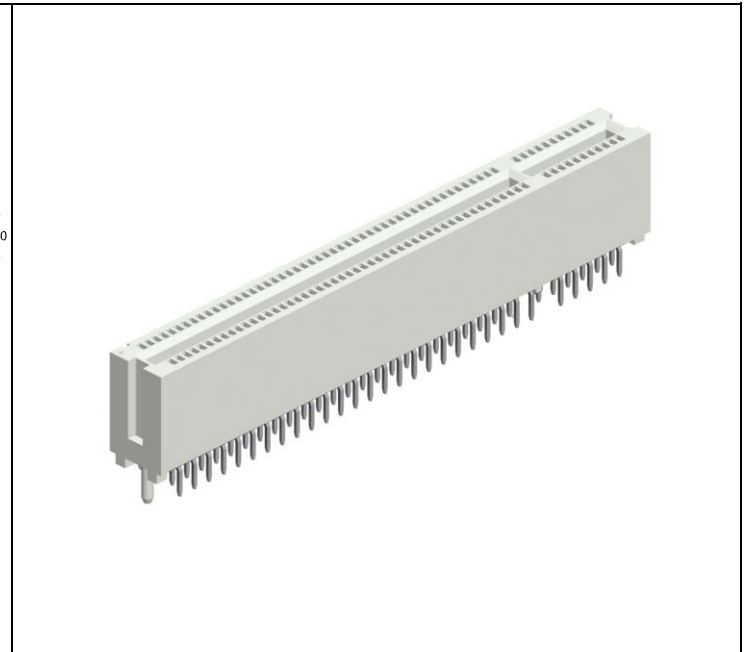
PCI Card Edge Connector - THT - 1.27mm pitch



120 pin

Technical drawings for the 120 pin connector. The top view shows a total length of 85.00 mm, with a 15.25 mm offset and a 63.55 mm main length. The height is 8.00 mm. The pitch is 1.27 mm. The side view shows a height of 7.60 mm and a contact height of 2.00 mm. The PCB hole layout shows a 64.77 mm length with 120 holes of diameter 1.02 mm, spaced at 1.905 mm. Two mounting holes of diameter 2.45 mm are located 1.905 mm from the ends. A #1 hole is also present.

PCI 32bit Order Code: **ECC-120-P050-95**



184 pin

Technical drawings for the 184 pin connector. The top view shows a total length of 128.02 mm, with segments of 14.99 mm, 63.25 mm, and 41.81 mm. The height is 8.89 mm. The pitch is 1.27 mm. The side view shows a height of 7.62 mm and a contact height of 1.88 mm. The PCB hole layout shows a 64.77 mm length with 184 holes of diameter 1.02 mm, spaced at 1.98x2.40 mm. Two mounting holes of diameter 2.44 mm are located 43.18 mm from the ends. A #1 hole is also present.

PCI 64bit 3.3V Order Code: **ECC-184-P053-95**

184 pin

Technical drawings for the 184 pin connector. The top view shows a total length of 128.02 mm, with segments of 63.25 mm, 14.99 mm, and 41.81 mm. The height is 8.89 mm. The pitch is 1.27 mm. The side view shows a height of 7.62 mm and a contact height of 1.88 mm. The PCB hole layout shows a 64.77 mm length with 184 holes of diameter 1.02 mm, spaced at 1.98x2.40 mm. Two mounting holes of diameter 2.44 mm are located 59.69 mm from the ends. A #1 hole is also present.

PCI 64bit 5V Order Code: **ECC-184-P055-95**

Application and Features

- Hi-rel dual beam contact assures reliable PC Board connections.
- Accepts PCB thickness of 1.57mm ±0.18
- 1.27mm contact center pitch.

Recommended Mating Board Dimensions

Technical drawing of mating board dimensions. The contact height is 1.57 mm. The hole diameter is 1.905 mm. The contact width is 0.91 mm. The hole offset is 1.91 mm. The contact pitch is 1.27 mm. The hole pitch is 1.91 mm. The contact length is 6.22 mm. The hole length is 7.87 mm. The contact angle is 60°. The hole diameter is 2x R1.27. The contact diameter is 4x C0.38.

Specifications

Current rating	1 A	Contact material	Copper alloy (RoHS compliant)
Insulation resistance	1000 MΩ min.	Plating	Contact area Au over Ni
Contact resistance	30 mΩ max.		Soldertail area Sn over Ni
Withstanding voltage	500 V AC rms.		(tin leadfree)
	60Hz for 1 Minute	Insulator material	PA66 (white) UL 94 V-0
Capacitance	2pF max.		(RoHS compliant)
Voltage rating	250 V AC rms.	Insertion force	2.26N max. per contact pair
Operating temperature	- 55°C to +105°C	Withdrawal force	0.15N min. per contact pair