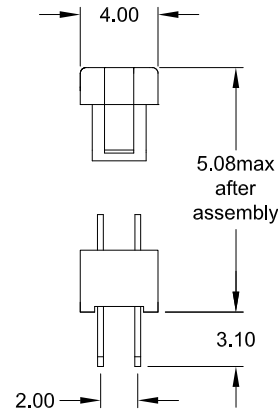
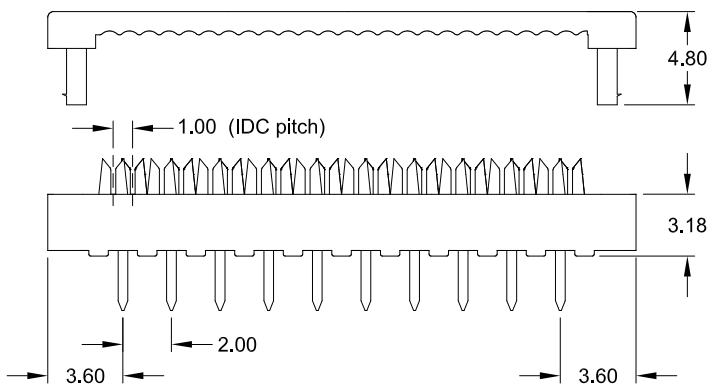
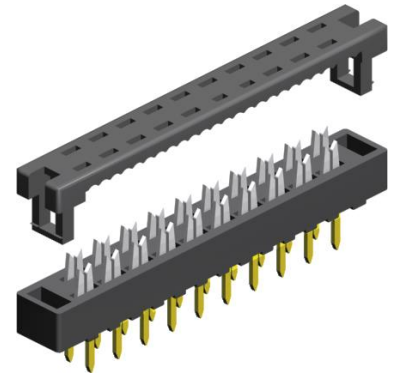


IDC – DIP Plug 2.00mm x 2.00mm

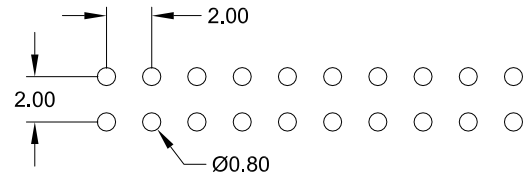
IDC pitch 1.00mm



**Application and Features**

- A perfect solution for attaching a 1.00mm pitch flat ribbon cable to a PC-board
- Low-profile, only 5.08mm with cable
- Designed for direct soldering to a PC-board or plugging into DIP Socket

**PCB Hole Layout**



**Specifications**

Current rating	1 A	Operating temperature	- 40°C to +105°C
Insulation resistance	1000 MΩ min.	Contact material (RoHS compliant)	Phosphor Bronze
Contact resistance	30 mΩ max.	Insulator material (RoHS compliant)	PBT UL 94 V-0
Withstanding voltage	500 V AC		

**How to order**

IDP - xxx - S200 - N5

**Nbr of contacts**

<p><b>006; 008; 010; 012</b>  <b>014; 016; 018; 020</b>  <b>022; 024; 026; 028</b>  <b>030; 034; 040; 044</b>  <b>050; 060; 068</b></p>
---

**Plating**

<p><b>N5</b></p> <p>Ni on IDC area / Au on solder tail</p>
--