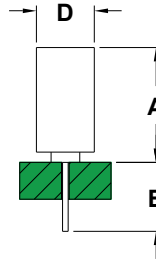
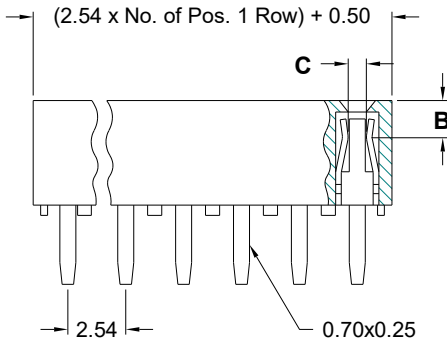
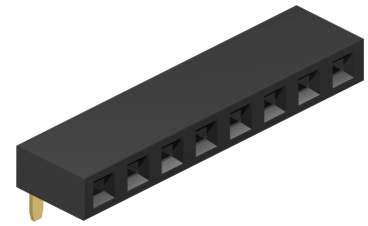
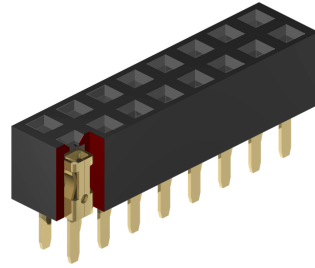
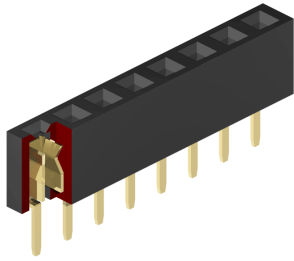
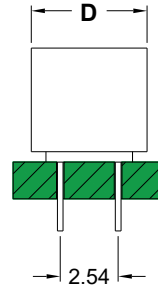


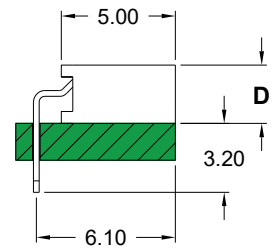
2.54mm pitch Female Header
- THT - folded contacts



single row

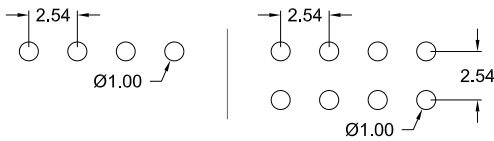


dual row



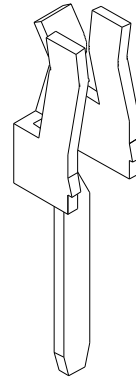
right angle

PCB Hole Layout

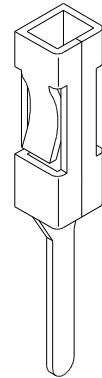


Specifications

Current rating	3 A
Insulation resistance	1000 MΩ min.
Contact resistance	20 mΩ max.
Withstanding voltage	500 V AC
Operating temperature	- 40°C to +105°C
Contact material	(RoHS compliant) Phosphor Bronze
Insulator material	(RoHS compliant) PBT UL 94 V-0



Contact Style 1



Contact Style 2

How to order

BF x - xxx - Xxxx - **55**

Rows	Nbr of contacts	Code	Connector Style	Contact Style	DIM "A" (mm)	DIM "B" (mm)	DIM "C" (mm)	DIM "D" (mm)	DIM "E" (mm)	Plating
1 = 1 row 2 = 2 rows	002 to 040 (1 row) 004 to 080 (2 rows)	S500	straight	1	5.00	1.50	0.42	2.50 (1 row) 5.00 (2 rows)	3.20	55 = Gold other platings on request
1 = 1 row	002 to 040 (1 row)	R500	R/A	1		1.50	0.42	2.50 (1 row)	3.20	
1 = 1 row 2 = 2 rows	002 to 030 (1 row) 004 to 060 (2 rows)	S680	straight	2	6.80	3.50	0.50	3.50 (1 row) 5.80 (2 rows)	3.50	
1 = 1 row 2 = 2 rows	002 to 040 (1 row) 004 to 080 (2 rows)	S710	straight	1	7.10	1.50	0.25	2.50 (1 row) 5.00 (2 rows)	3.20	
1 = 1 row 2 = 2 rows	002 to 040 (1 row) 004 to 080 (2 rows)	S850	straight	1	8.50	1.50	0.25	3.00 (1 row) 5.50 (2 rows)	3.20	