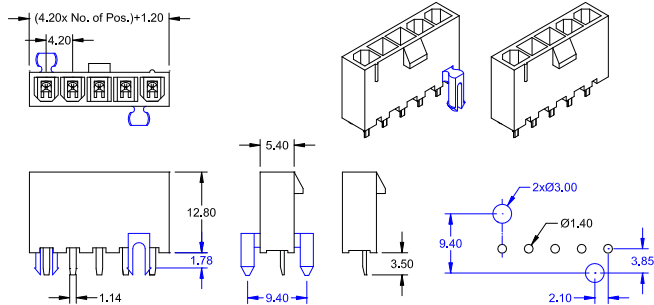




P - Type Single Row fully shrouded with polarity protection

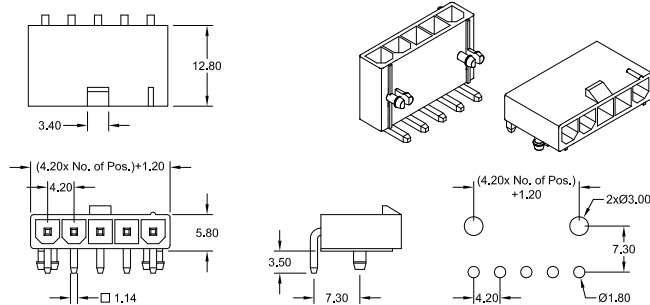
-THT- Male Header straight (top entry) with & w/o board lock clips



Order Code: PCS-1xx-P420-99

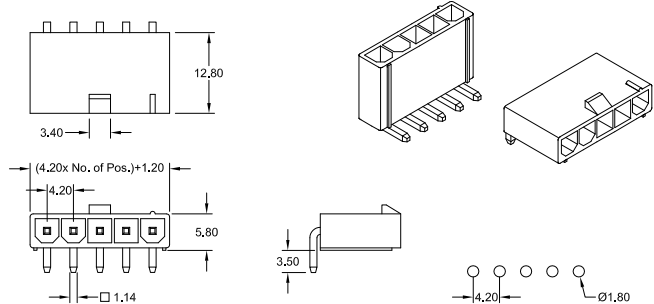
PCS-1xx-PN420-99

-THT- Male Header right angle (side entry) with board lock clips



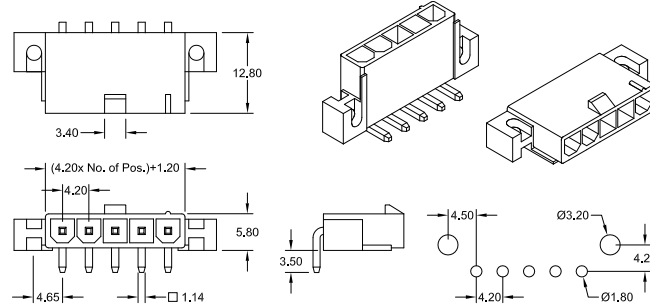
Order Code: PCR-1xx-P420-99

-THT- Male Header right angle (side entry)



Order Code: PCR-1xx-A420-99

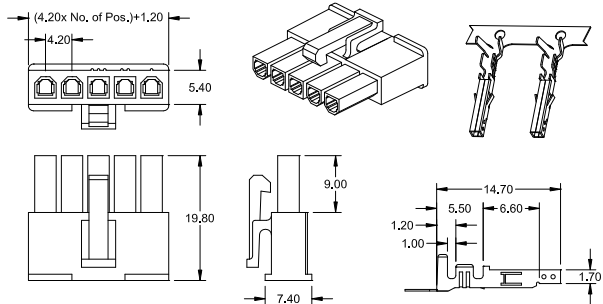
-THT- Male Header right angle (side entry) with mounting ears



Order Code: PCR-1xx-W420-99

P - Type Female Plug Single Row -Clip lock Type- with polarity protection

mate with -P420-, -A420- & -W420- Male Header



Order Code Housing: PCF-1xx-P420

Contact: PCF-999/xxX-P420-99

Current rating @30°C:
(dependant on number of contacts and wire size)

Wire Size AWG	Contacts			
	02 ~ 03	04 ~ 06	07 ~ 10	11 ~ 12
#16	9A	8A	7A	6A
#18	9A	8A	7A	6A
#20	7A	6A	5A	5A
#22	5A	4A	4A	4A
#24	4A	3A	3A	3A
#26	3A	2A	2A	2A
#28	2A	1A	1A	1A

Specifications

Current rating	pls. see box above	Voltage rating	600 V AC/DC	Contact material	Brass or PhBz
Insulation resistance	1000 MΩ min.	Withstanding voltage	1500 V AC	Insulator material	PA66 UL 94V-2
Contact resistance	20 mΩ max.	Operating temperature	-25°C to +85°C	PCB thickness	1.60 mm

How to order

PC X - x xx - X 420 - 99

Type	Rows	Nbr of Contacts	Execution	Plating
F = Female R = R/A Male S = Straight Male	1 = single row <i>if Crimp Contact:</i> 9	02 - 12 = P, A & W - Type <i>if Crimp Contact:</i> (MOQ: 5K / reel) <i>if Brass:</i> 99/27 = for AWG 22~28 99/20 = for AWG 18~24 99/14 = for AWG 16 <i>if Phosphor Bronze:</i> 99/27P = for AWG 22~28 99/20P = for AWG 18~24 99/14P = for AWG 16	P = with board lock clips PN = without board lock clips A = without mounting ears W = with mounting ears for details see above dwg's	99 = Tin (leadfree) other platings on request