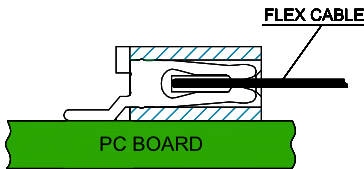
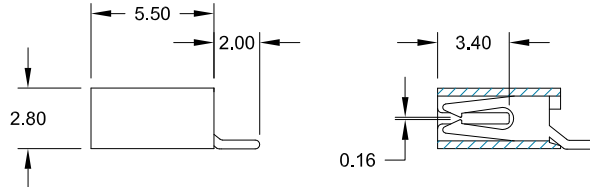
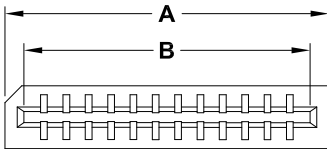
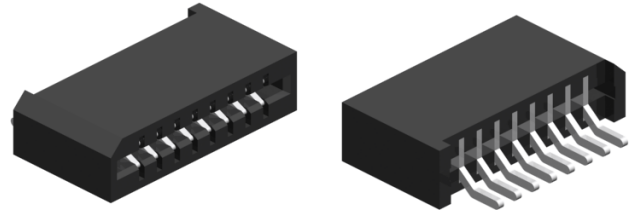
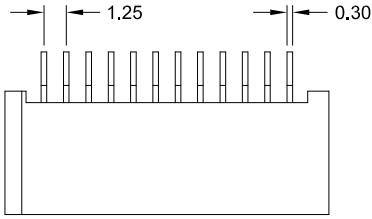
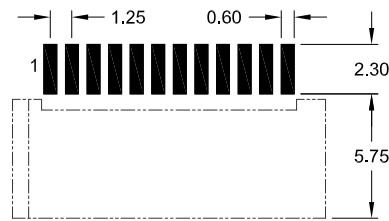


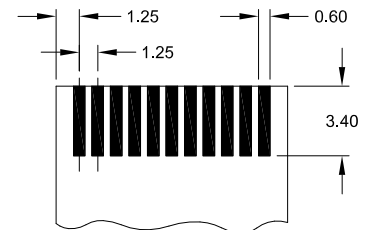
FPC/FFC Connector **LIF Type**
 - SMT - 1.25mm pitch horizontal



PCB Surface Mount Layout



Recommended FPC/FFC dimensions



thickness 0.30mm±0.05

Specifications

Current rating	0.5 A max.	Operating temperature	- 20°C to +85°C
Insulation resistance	500 MΩ min.	Processing temperature	+250°C +0/-5°C for 3sec.
Contact resistance	30 mΩ max.	Contact material	Phosphor Bronze (RoHS compliant)
Withstanding voltage	500 V AC	Contact plating	Tin (leadfree)
		Insulator material	PA9T (black) UL 94 V-0 (RoHS compliant)

Dimensions (mm)

Contacts	DIM "A"	DIM "B"	Contacts	DIM "A"	DIM "B"	Contacts	DIM "A"	DIM "B"	Contacts	DIM "A"	DIM "B"
003	7.15	5.10	012	18.40	16.35	021	29.65	27.60	030	40.90	38.85
004	8.40	6.35	013	19.65	17.60	022	30.90	28.85			
005	9.65	7.60	014	20.90	18.85	023	32.15	30.10			
006	10.90	8.85	015	22.15	20.10	024	33.40	31.35			
007	12.15	10.10	016	23.40	21.35	025	34.65	32.60			
008	13.40	11.35	017	24.65	22.60	026	35.90	33.85			
009	14.65	12.60	018	25.90	23.85	027	37.15	35.10			
010	15.90	13.85	019	27.15	25.10	028	38.40	36.35			
011	17.50	15.10	020	28.40	26.35	029	39.65	37.60			

How to order

FCL - xxx - H125 - 99 /X

