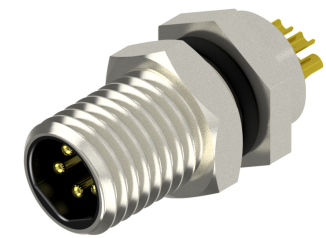
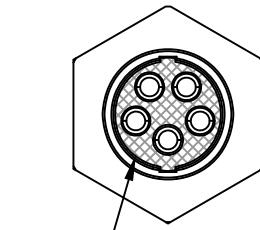
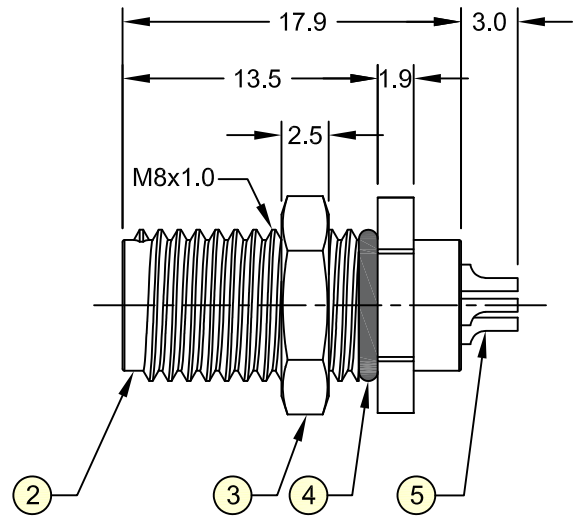
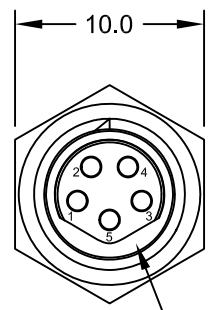


REV.	DESCRIPTION	DATE	DRAWN
A	New	16.12.2016	Cherry
B	General update	03.07.2019	Cheng



**Order Code**  
M08-MB05-CVFP-55/00

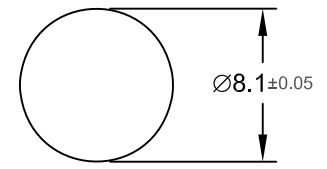
**Specifications**

**Electrical**  
Current rating: 3A per contact  
Insulation resistance: 100MΩ min.  
Voltage rating: 30V AC/DC  
Withstanding voltage: 650V AC

**Mechanical Requirements**

Waterproof rate: IP68  
Recommended panel thickness: 0.80 to 4.00mm  
Recommended Torque: 6~7 kgf-cm  
Operating life: 100 cycles min.

In accordance with IEC 61076-2-104:2014



Recommended Panel Cut-out



Item	Part Name	Materials/Finish(Color)	Q'TY
1	Housing	Thermoplastic / Black	1
2	Metal Body	Copper Alloy / Ni Plated	1
3	Hex Nut	Copper Alloy / Ni Plated	1
4	O-Ring	NBR / Black	1
5	Contact	Copper Alloy / Au Plated	5
6	Glue	Epoxy / Black	-

E-tec 2019 © - all rights reserved www.e-tec.asia



UNIT	mm	GENERAL TOLERANCE		DRAWN	Cherry	DATE	16.12.2016	DWG. NO.	M08-MB05-CVFP-55/00	SHEET	1/1
SCALE	Free	X.° ±	X. ±	CHECK	Cheng	DATE	03.07.2019	SERIES NO.	M08-MB05-CVFP-55/00	REV.	B
		.XX° ±	.XX ± 0.50	APPROVE	Fagi	DATE	03.07.2019				
		.XXX° ±	.XXX ±								

**M8 Circular Connector**  
**5-Pin Male B - Coding Type**  
Solder Cup - Panel Front Mount