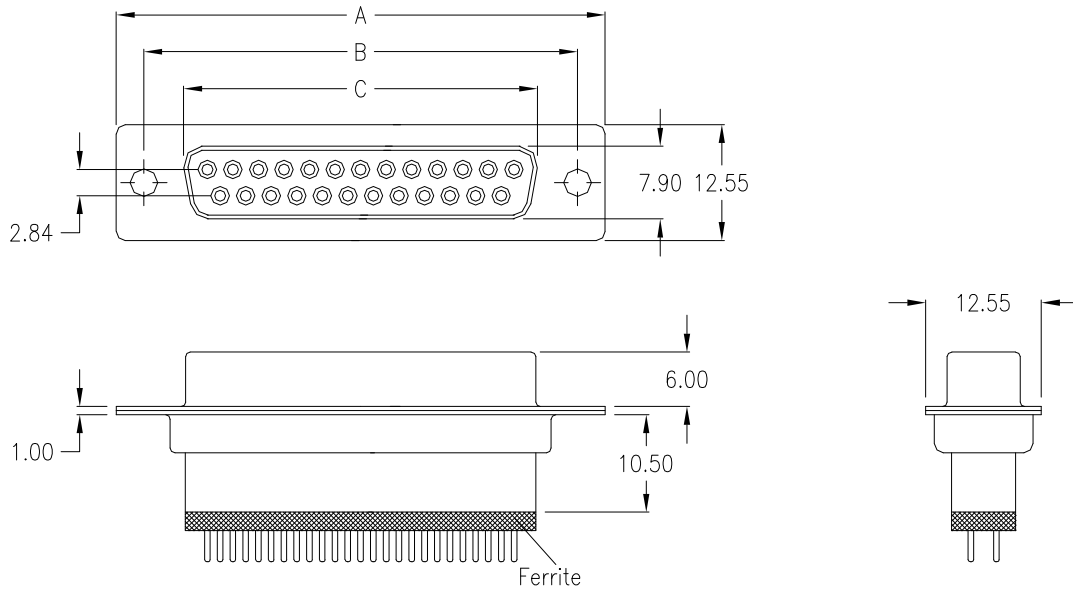


female



Ordering Code

SDF - xxx - B111 - 95 / F XXX

No. of contacts

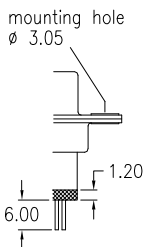
Option

Plating: **-95 = tin(leadfree)/gold**

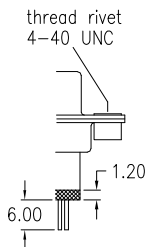
General Specification page 72

No. of contacts	Dimension		
	A	B	C
009	30.81 1.213	24.99 .984	16.33 .643
015	39.14 1.541	33.32 1.312	24.66 .971
025	53.04 2.088	47.04 1.852	38.38 1.511

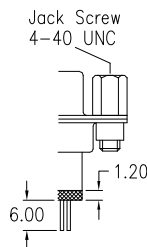
Options



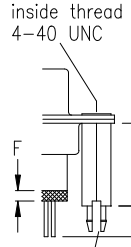
T0



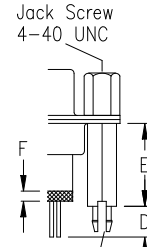
T



TJ



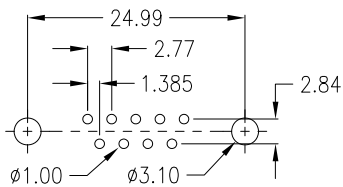
BR



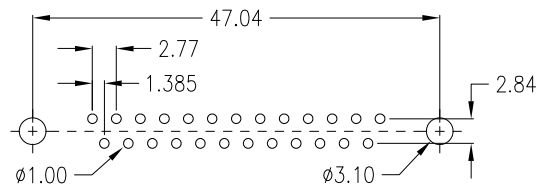
BRJ

D	E	F	Option
3.00	12,70	1.20	3
3.20	14,50	1.20	4

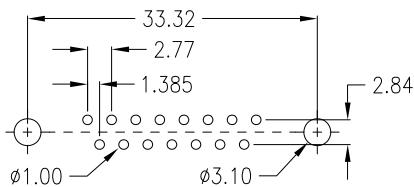
PCB Layout „female“



9 pin



25 pin



15 pin