

Ordering Code

SDM - xxx - B111 - 95 / XXX

No. of contacts

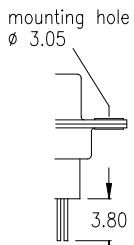
Option

Plating: -95 = tin(leadfree)/gold

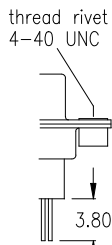
General Specification page 72

No. of contacts	Dimension		
	A	B	C
009	<u>30.81</u> 1.213	<u>24.99</u> .984	<u>16.92</u> .666
015	<u>39.14</u> 1.541	<u>33.32</u> 1.312	<u>25.25</u> .994
025	<u>53.04</u> 2.088	<u>47.04</u> 1.852	<u>38.96</u> 1.534
037	<u>69.32</u> 2.729	<u>63.50</u> 2.500	<u>55.42</u> 2.182

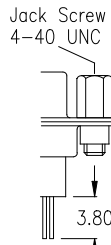
Options



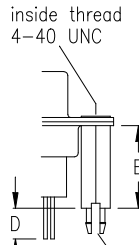
T0



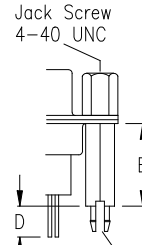
T



TJ



BR

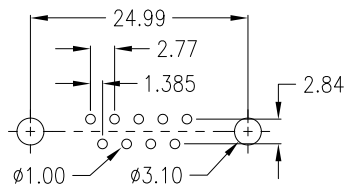


BR_J

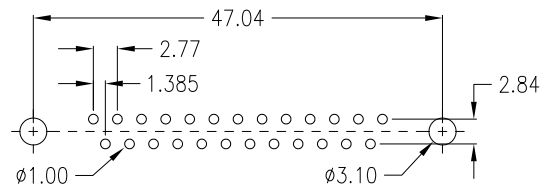
D ±0.20	E	Option
3,20	12,70	1
3,50	11,00	2
3,20	14,50	4
4,20	13,50	5

PCB Layout „male“

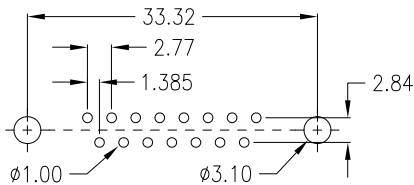
9 pin



25 pin



15 pin



37 pin

