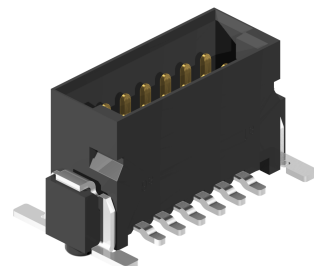
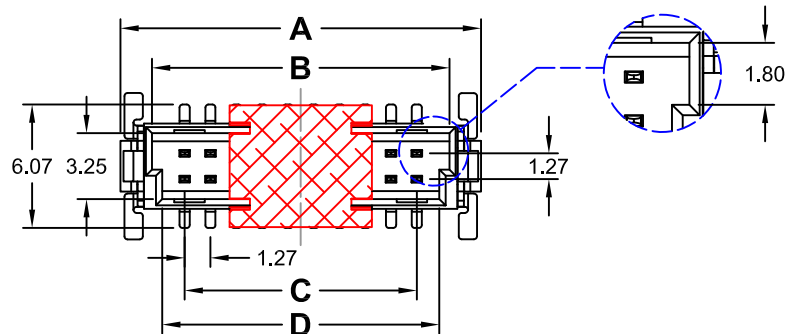


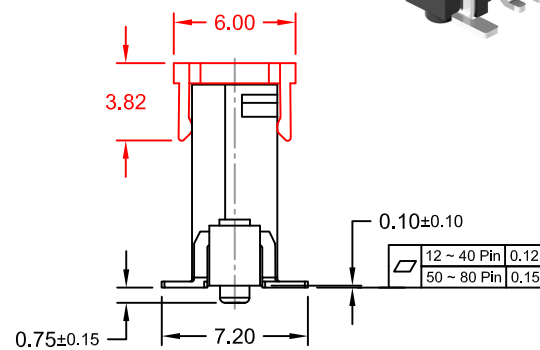
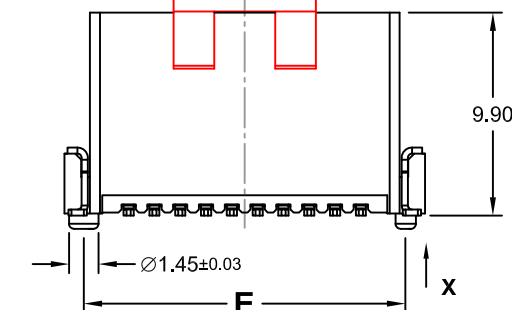
REV.	DESCRIPTION	DATE	DRAWN
A	New	23.01.2019	Ronny
B	Remove Plating Option 95 & 9L5, add View X	23.12.2018	Cheng



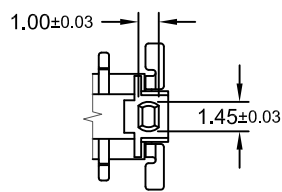
Order Code
MBC-xxx-QMV99-xx/11E

Plating
96 = Tin/10µ" Gold
97 = Tin/15µ" Gold
98 = Tin/30µ" Gold

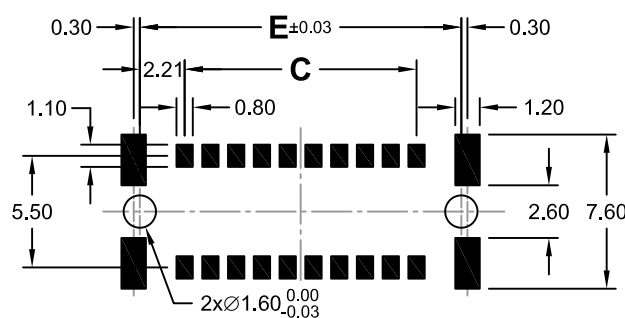
PickUp Cap
 10-24 Pin 7.00
 26-100Pin 16.00



No. of Pins	Dimension mm				
	A	B	C	D	E
010	11.43	8.30	5.08	7.30	9.50
012	12.70	9.57	6.35	8.57	10.77
016	15.24	12.11	8.89	11.11	13.31
020	17.78	14.65	11.43	13.65	15.85
026	21.59	18.46	15.24	17.46	19.66
030	24.13	21.00	17.78	20.00	22.20
032	25.40	22.27	19.05	21.27	23.47
040	30.48	27.35	24.13	26.35	28.55
050	36.83	33.70	30.48	32.70	34.90
068	48.26	45.13	41.91	44.13	46.33
080	55.88	52.75	49.53	51.75	53.95



View X



Recommended PCB Layout Top View
(Tolerance ±0.05)

Specifications

Electrical
 Current rating: 0.5 ~ 1.0A
 Insulation resistance: 10000MΩ min.
 Contact resistance: 25mΩ max.
 Withstanding voltage: 500V

Material

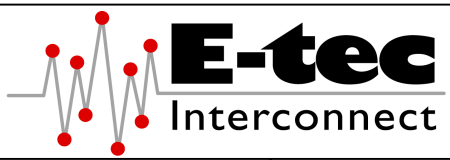
Contact: Copper Alloy
 Plating: Tin on solder, Gold on contact area
 Insulator: High Temperature Thermoplastic (black)
 UL 94V-0

Operating temperature: -55°C to +125°C
 Processing temperature: +260°C +0/-5°C
 for 5 seconds

Packing: Reel with Pickup Cap



E-tec 2020 © - all rights reserved www.e-tec.asia



UNIT	mm	GENERAL TOLERANCE		DRAWN	Ronny	DATE	10.01.2017	DWG. NO.	MBC-QMV99/11	SHEET 1/1
SCALE	Free	.X° ±	.X ±	CHECK	Cheng	DATE	23.01.2020	SERIES NO.	MBC-xxx-QMV99-xx/11E	REV. B
		.XX° ±	.XX ± 0.25	APPROVE	Fagi	DATE	23.01.2020			
		.XXX° ±	.XXX ±							

Multi BUS/Backplane Connector
Q-Type Male SMT vertical
 1.27mm Pitch - Height 9.90mm
Compatible to ERNI INTERact® Series SMC Type