

# Plug-Board Connector - SMT -

0.50mm - 0.60mm - 0.80mm Pitch



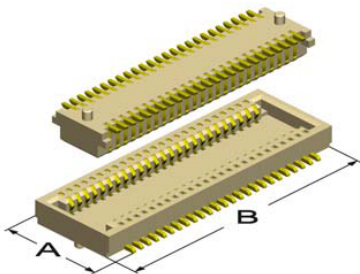
- Fine pitch, super low profile, from 1.50mm to 9.50mm between the boards
- The stamped, solid contacts assure reliable PC Board connections
- Tube or Reel packing available
- Also available with "locating pegs" for easy positioning of the connector during placement
- Some types can also be offered with metal solder tabs, which provide additional mechanical strength to avoid damages to the solder joints during disconnection of the male & female connectors.

**Please inform us of your application and precise requirements, so that our product engineers may offer you a suitable solution.**

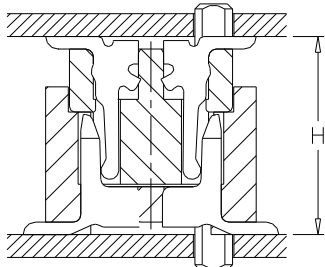
Please indicate your dimensional requirements for the 0.50mm  0.60mm  0.80mm  pitch "Plug-Board" connector.

Solutions **without** metal solder tabs, but with & without locating pegs.

Number of Contacts in total:



Dimension "A" (max.):   
Dimension "B" (max.):



Your board-to-board requirement

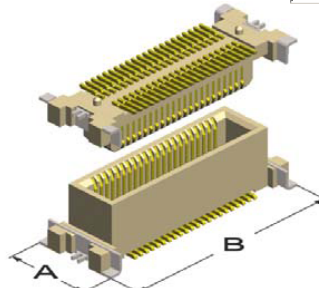
Dimension "H":

Do you wish to receive this connector with  or without  locating peg?

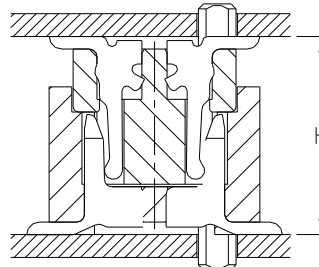
Please indicate your dimensional requirements for the 0.50mm  0.60mm  0.80mm  pitch "Plug-Board" connector.

Solutions **with** metal solder tabs, but with & without locating pegs.

Number of Contacts in total:



Dimension "A" (max.):   
Dimension "B" (max.):



Your board-to-board requirement

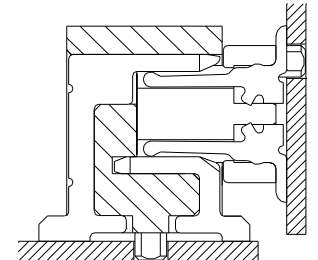
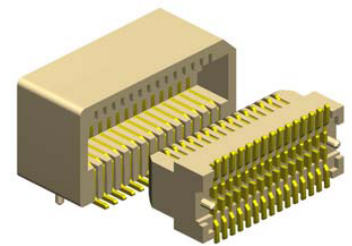
Dimension "H":

Do you wish to receive this connector with  or without  locating peg?

Please indicate your dimensional requirements for the 0.50mm  0.60mm  0.80mm  pitch right angle type "Plug-Board" connector.

Solutions **without** metal solder tabs, but with & without locating pegs.

Number of Contacts in total:



Do you wish to receive this connector with  or without  locating peg?

**In addition, please also provide the following information:**

**For which application do you intend to use our fine pitch "Plug Board" connector?**

**Please indicate your quantity requirement for "prototypes"**

**and "production"**

**Please also indicate the expected "life time" of your project**

**Please e-mail this page to**

**and we will get back to you as soon as possible**

**with a solution adapted to your needs.**

## Specifications for E-tec fine pitch Plug Board Connectors

Current rating	0,3 A	Operating temperature	- 45° to +125°C
Insulator resistance	500 MΩ min. at 100V DC	Processing temperature	+230°C for 60 sec. max. +260°C for 10 sec. max.
Contact resistance	50 mΩ max. at 100mA	Contact material	Phosphor Bronze
Withstanding voltage	150 V AC 1 minute	Insulator material	Nylon UL 94 V-0